



THE CARDIFF

ON EGLINTON

PURCHASER INCENTIVES

\$10,000 DISCOUNT off

- 1 Bedroom Suites
- 1 Bedroom + Den Suites

\$20,000 DISCOUNT off

- 2 Bedroom Suites
- 2 Bedroom + Den Suites
- 3 Bedroom + Den Suites

\$30,000 DISCOUNT off

- Townhomes

- **ONLY 10% DEPOSIT in the First Year**
- 5% in 30 days; 5% in 120 days; 5% in 380 days; 5% on occupancy

- **FREE ASSIGNMENT** (Just pay legal fee!)

- **FREE RIGHT TO LEASE DURING OCCUPANCY**

- **CAPPED DEVELOPMENT CHARGES & LEVIES**

\$10,900 for 1 Bedroom Suites

\$12,900 for 2 Bedroom Suites & Townhomes

\$13,900 for 3 Bedroom Suites & Townhomes

- **\$10,000 DISCOUNT off PARKING**

Please speak to Sales Representative for more details. Some restrictions may apply. Incentive Program is a limited time offer.

Prices, Incentives and specifications are subject to change without notice E. & O.E.

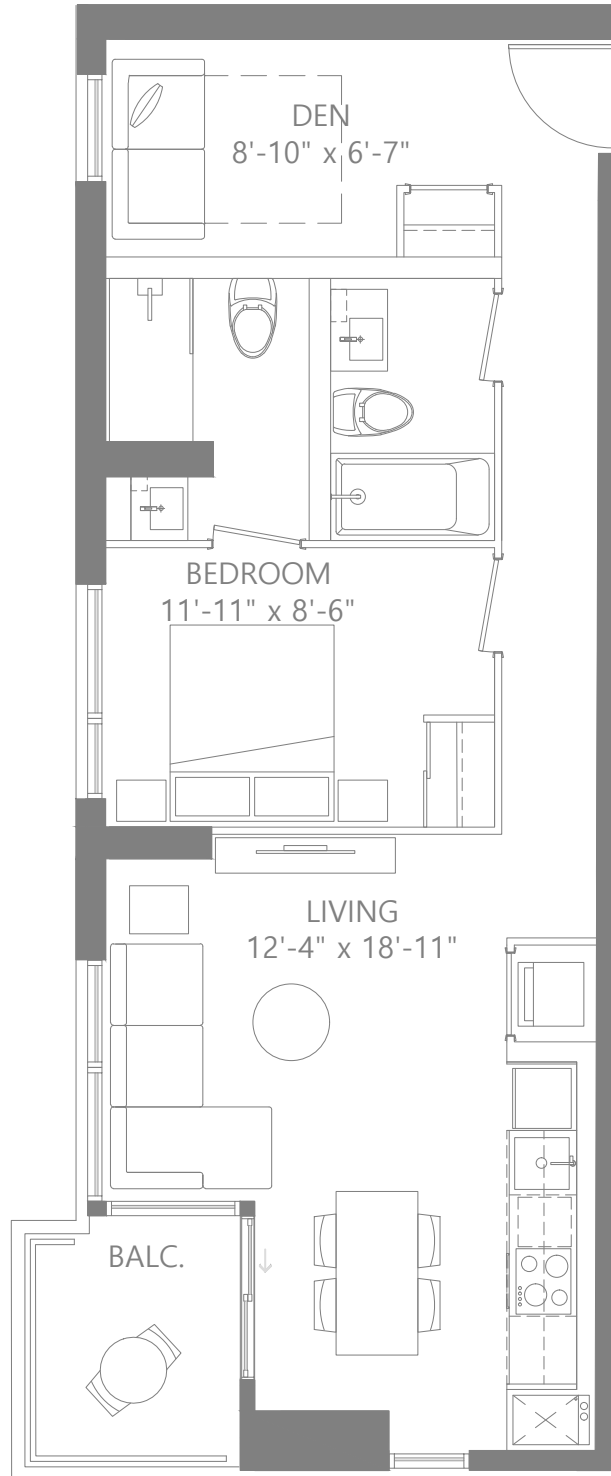
April 18th, 2018





THE CARDIFF

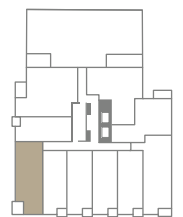
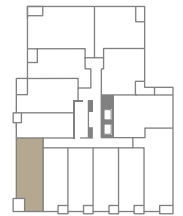
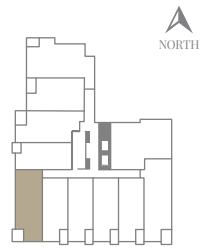
ON EGLINTON



**1 BEDROOM
+ DEN**

680 SQ. FT. LIVING
+ 47 SQ. FT. BALCONY

SUITES 201, 307, 507 & 607



Prices & specifications subject to change without notice. Useable square footage may vary from that stated herein. Furniture not included. Terrace condition may require an interior step. Renderings are artist's concept only E. & O. E. © April 2018 Sierra Building Group. All rights reserved.





THE CARDIFF

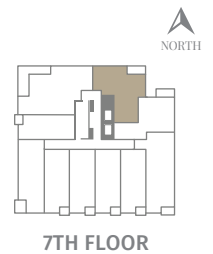
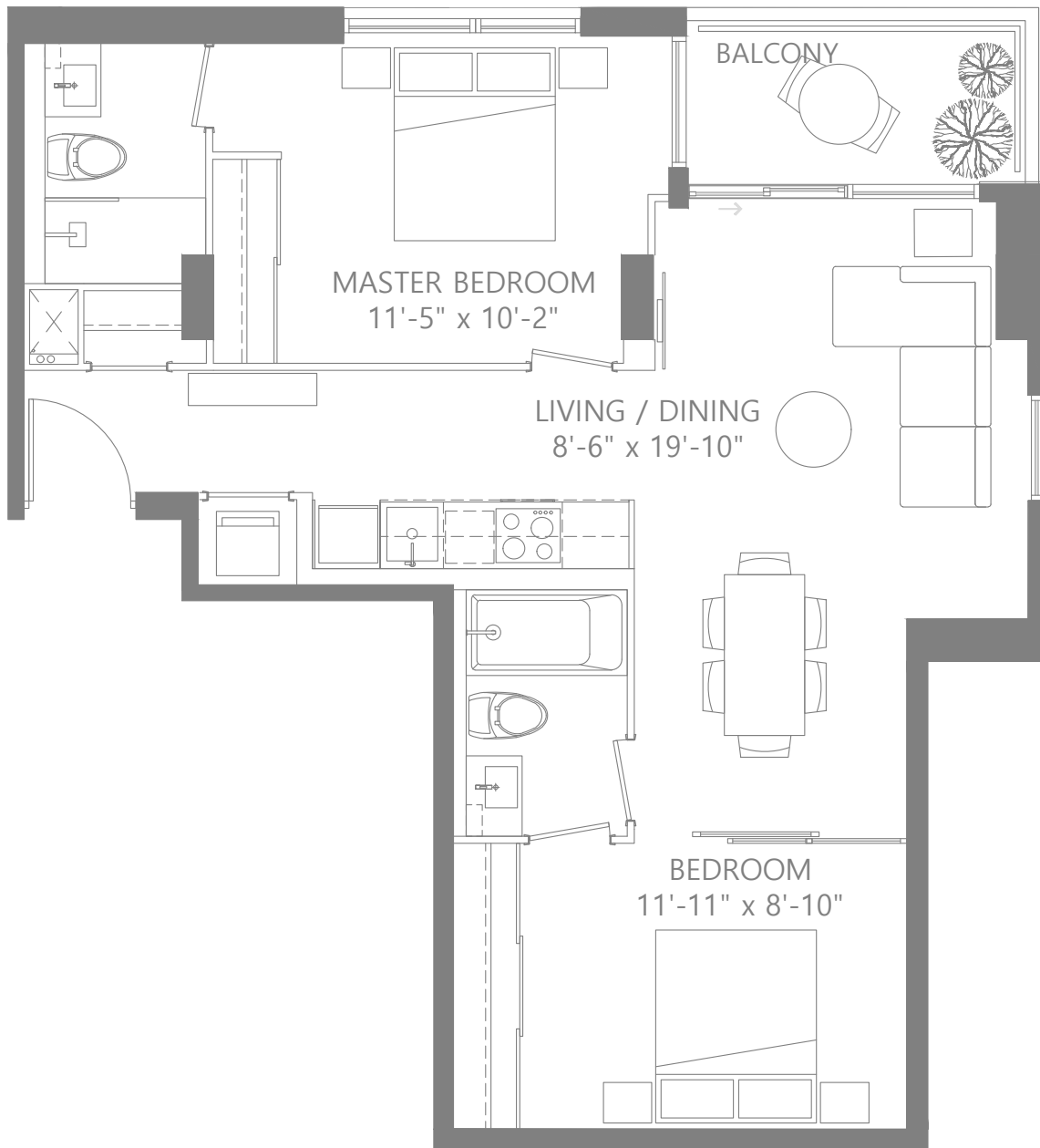
ON EGLINTON

2 BEDROOM

790 SQ. FT. LIVING

+ 53 SQ. FT. BALCONY

SUITE 710



Prices & specifications subject to change without notice. Useable square footage may vary from that stated herein. Furniture not included. Terrace condition may require an interior step. Renderings are artist's concept only E. & O. E. © April 2018 Sierra Building Group. All rights reserved.





THE CARDIFF

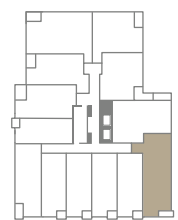
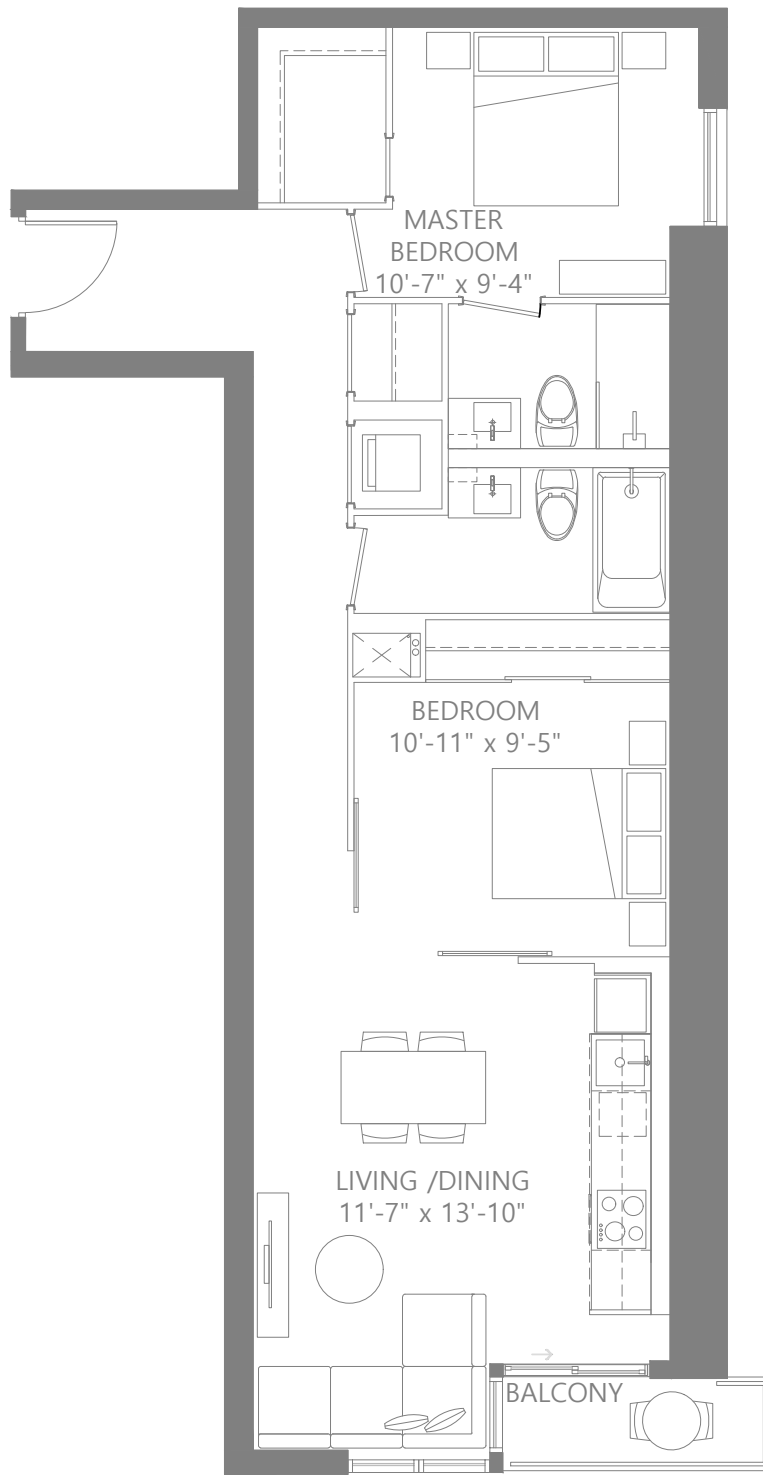
ON EGLINTON

2 BEDROOM

860 SQ. FT. LIVING

+ 30 SQ. FT. BALCONY

SUITES 402 & 602



4TH FLOOR



6TH FLOOR

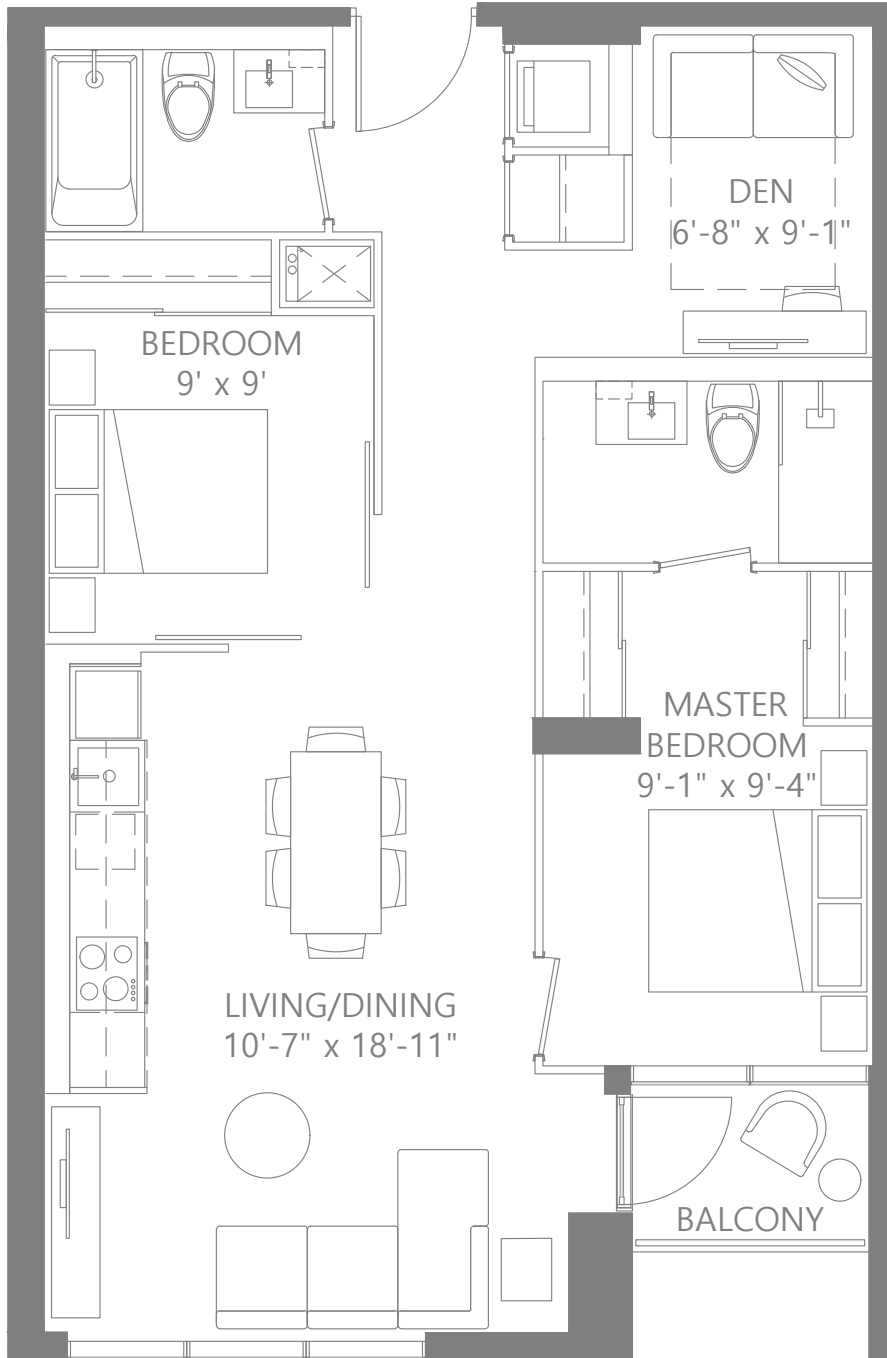
Prices & specifications subject to change without notice. Useable square footage may vary from that stated herein. Furniture not included. Terrace condition may require an interior step. Renderings are artist's concept only E. & O. E. © April 2018 Sierra Building Group. All rights reserved.





THE CARDIFF

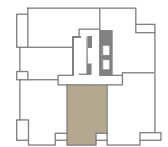
ON EGLINTON



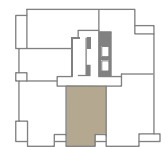
2 BEDROOM + DEN

830 SQ. FT. LIVING
+ 30 SQ. FT. BALCONY

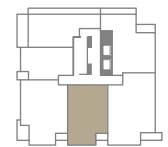
SUITES 903, 1003 & 1103



9TH FLOOR



10TH FLOOR



11TH FLOOR

Prices & specifications subject to change without notice. Useable square footage may vary from that stated herein. Furniture not included. Terrace condition may require an interior step. Renderings are artist's concept only E. & O. E. © April 2018 Sierra Building Group. All rights reserved.





THE CARDIFF

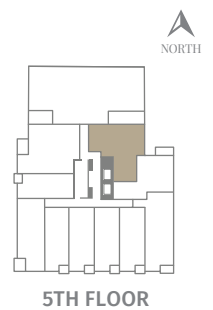
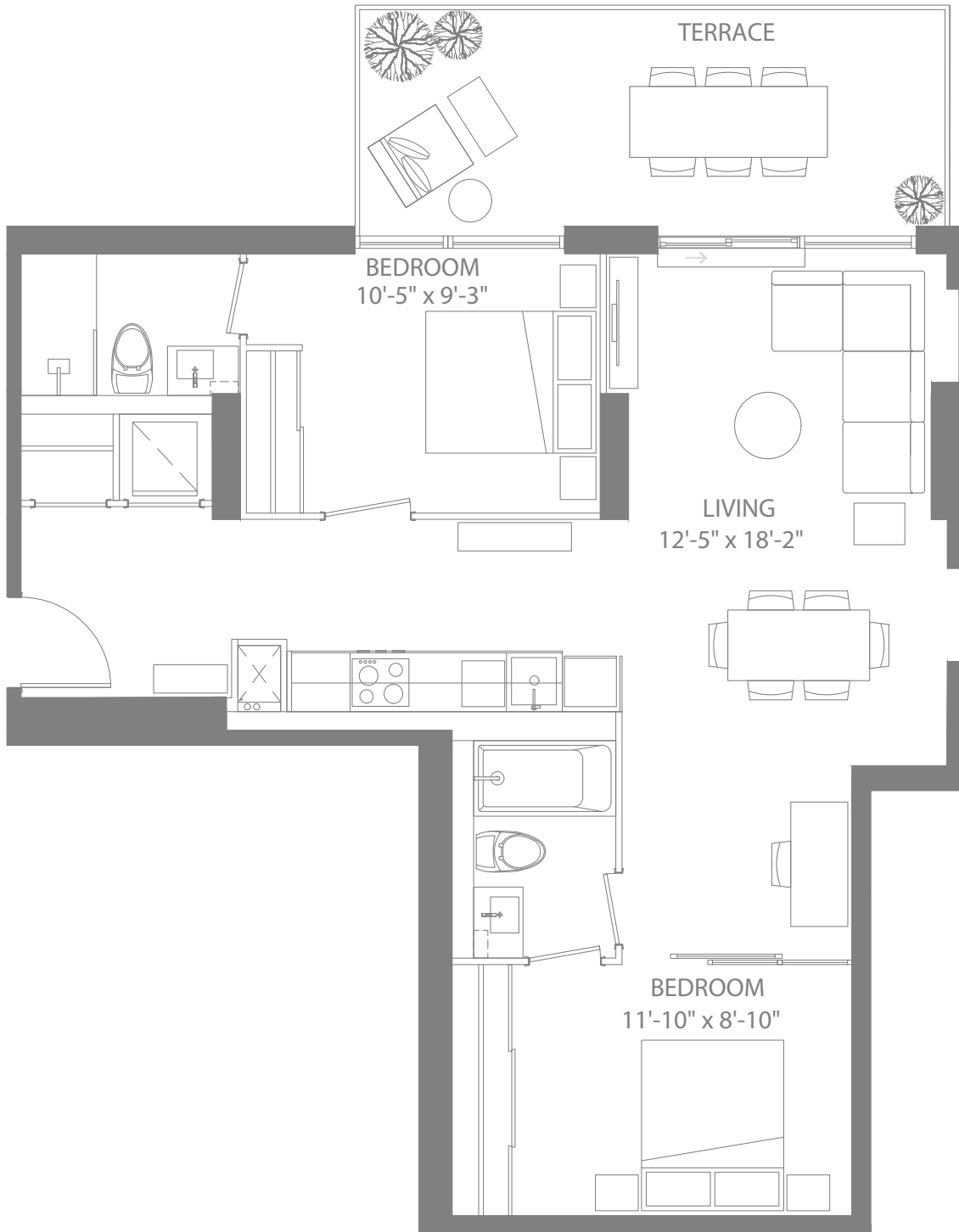
ON EGLINTON

2 BEDROOM

881 SQ. FT. LIVING

+ 195 SQ. FT. TERRACE

SUITE 510



Prices & specifications subject to change without notice. Useable square footage may vary from that stated herein. Furniture not included. Terrace condition may require an interior step. Renderings are artist's concept only E. & O. E. © April 2018 Sierra Building Group. All rights reserved.





THE CARDIFF

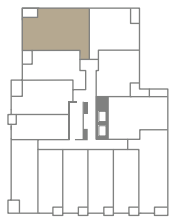
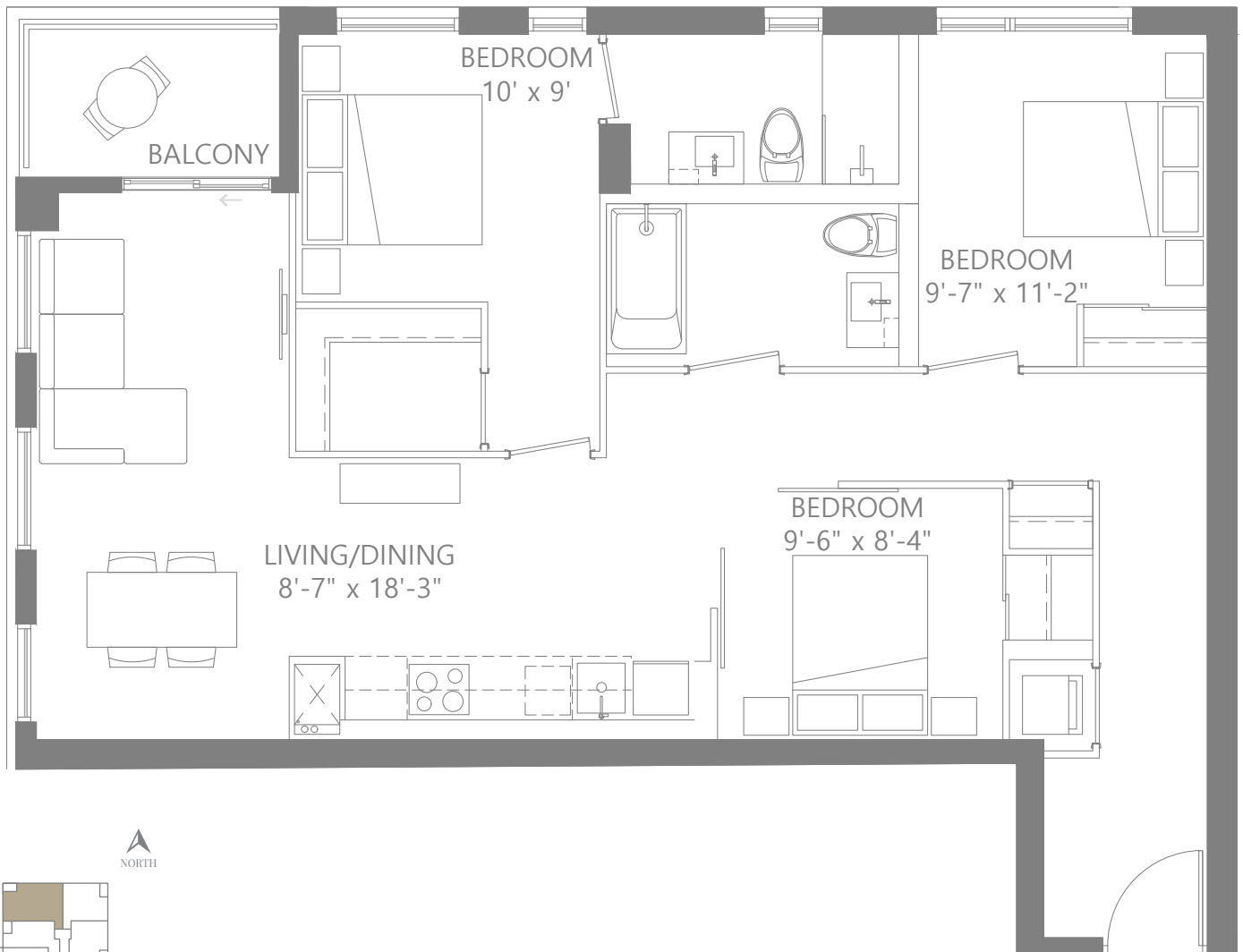
ON EGLINTON

3 BEDROOM

990 SQ. FT. LIVING

+ 46 SQ. FT. BALCONY

SUITES 311 & 411



3RD & 4TH FLOORS

Prices & specifications subject to change without notice. Useable square footage may vary from that stated herein. Furniture not included. Terrace condition may require an interior step. Renderings are artist's concept only E. & O. E. © April 2018 Sierra Building Group. All rights reserved.





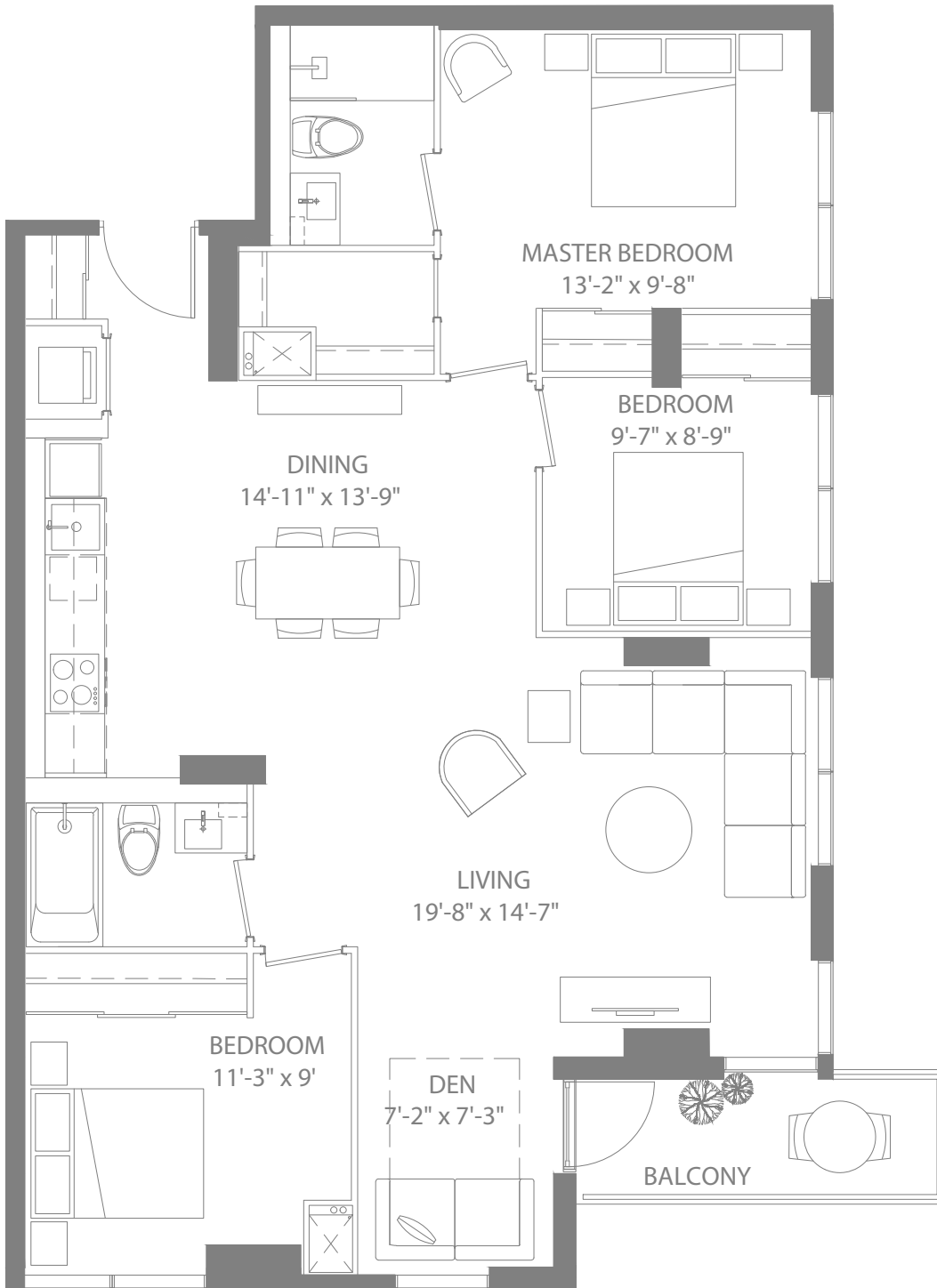
THE CARDIFF

ON EGLINTON

3 BEDROOM + DEN

1136 SQ. FT. LIVING
+ 56 SQ. FT. BALCONY

SUITES 902, 1002 & 1102



9TH FLOOR



10TH FLOOR



11TH FLOOR

Prices & specifications subject to change without notice. Useable square footage may vary from that stated herein. Furniture not included. Terrace condition may require an interior step. Renderings are artist's concept only E. & O. E. © April 2018 Sierra Building Group. All rights reserved.

